

1

2

3

4

5

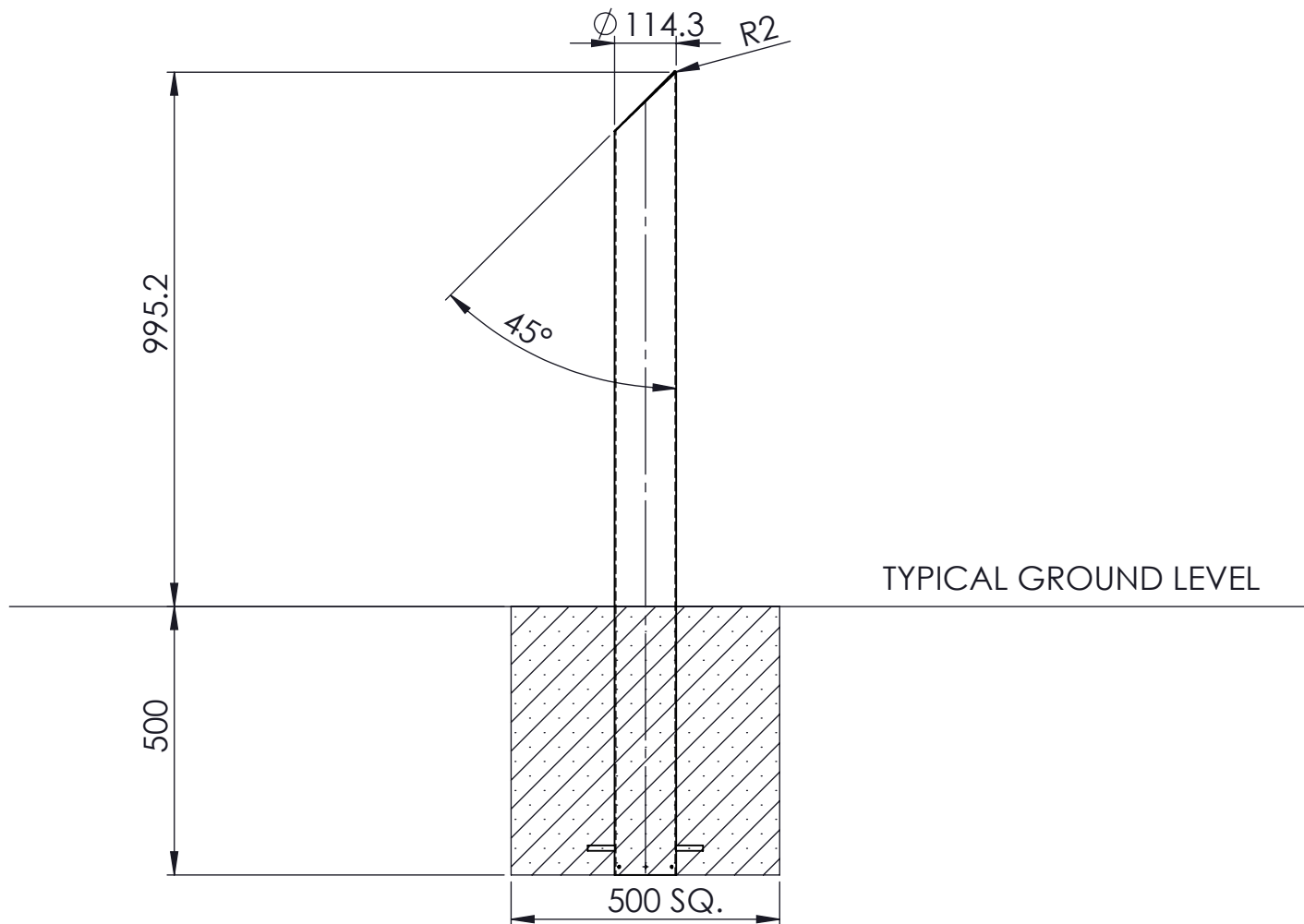
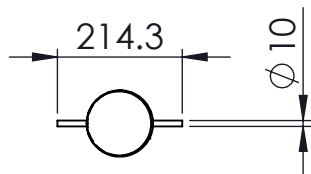
6

A

B

C

D



PRODUCT SPECIFICATION

MATERIAL:
BOLLARD: GRADE 316L STAINLESS STEEL
2mm WALL

FINISH:
BOLLARD: BRUSHED SATIN

WEIGHT:
8.38 KG Approx

EXTRAS:
Bollards in this range can come with the following:
- Turned grooving
- Hazard class 2 reflective banding
- Stainless steel bezel

ROOT FIXED INSTALLATION:
1. Determine suitable location for bollard. Perform visual checks, scan and check drawings for utilities/live cabling.
2. Evacuate cuboid foundation for bollard. (Guidance: See Drawing)
3. Locate bollard centrally in evacuation hole, cast C30 concrete or similar medium slump around bollard. Ensure bollard is vertical in all planes. Where applicable pour concrete into bollards with separate caps, fill to brim then cap.
4. Allow the foundation to cure. Concrete should be protected by polythene during the first 24 hours following installation.

Foundation sizes given are for customer guidance and suited to sub-soils with good load bearing capabilities. Where adverse site conditions are met professional advice to be sought.

For operation and maintenance please refer to the **Marshalls Street Furniture Maintenance Guide**.

A	FIRST ISSUE	06/11/13	MB
RevNo	Revision Note	Date	Signature

Title:
RS004 114x1500 MITRED RF STANDARD

Drawing No:
PS-RH-BL-10225

1

2

3

4

5

6